

Our services are of use to Geologists who

- Evaluate probability of charge in frontier basins off-shore
- Investigate type of charge in an offshore basin.
- Plan offshore seismic campaigns
- Explore in rifts or fold-and-thrust belts
- Plan a seismic acquisition program in a remote area.
- Explore for base and precious metals deposits using a model-based approach.
- Acquire field verification of any type of remote sensing or photogeologic interpretation.

Our services are of use to Engineers who

- Plan production wells in deep water.
- Require on- or off-shore environmental baseline data.

And of use to Archaeologists who seek

- To accurately locate ancient shorelines
- Evidence of ancient land-use patterns
- To determine the provenance of cultural objects or building materials.
- Need help in the use, acquisition, or interpretation of remotely sensed data.

About John Berry ...

John Berry has nearly 40 years of Geological experience, including extensive field experience on four continents, in:

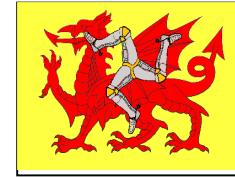
- Frontier oil and gas exploration
- Mining exploration
- Marine applications of remote sensing
- Archaeological investigations.

He is an internationally recognized authority on Geological Remote Sensing, and is the principal author of the chapter on Remote Sensing for Hydrocarbon Exploration in the ASPRS Manual of Remote Sensing, 3rd ed., and v.3.

His professional affiliations include the American Association of Petroleum Geologists, the American Society of Photogrammetry and Remote Sensing, and the Geological Society of London. John Berry has a Masters degree in Marine Geology and Geophysics from Columbia University and a Bachelors degree in Geology from the University of Pennsylvania.

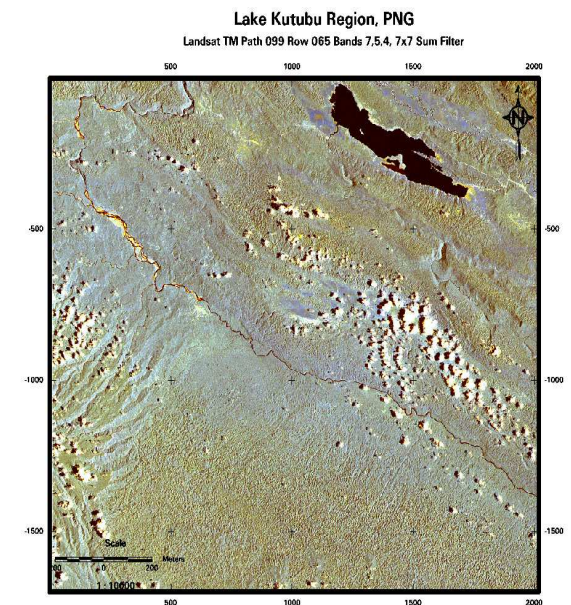
JOHN BERRY ASSOCIATES

5000 Beverly Hills Dr.
AUSTIN, TX 78731, USA
(512) 921-1472
Fax: (512) 452-8068
<http://www.johnlberry.com>
jlassoc@flash.net



**JOHN BERRY
ASSOCIATES**

Remote Sensing Consulting Services



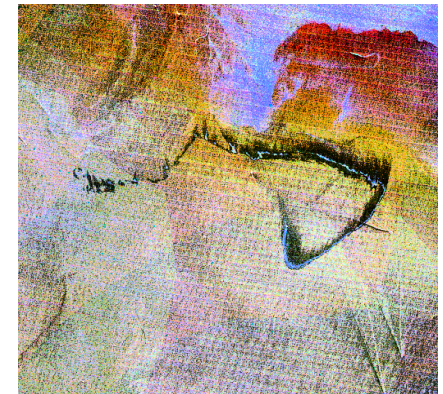
**Oil, Gas, and Minerals
Exploration
Environment Studies
Archaeological Investigation**

Expert Services

- Marine Oil Spill detection and interpretation
- Interpretation of remotely sensed data of the oceans for swell, currents, internal waves, pollution, etc.
- Integration of remote sensing, airborne geophysics and surface geochemical data for hydrocarbon exploration
- Structural interpretation in compressional and extensional geologic regimes
- Terrain evaluation for seismic acquisition logistics, layout, and mitigation of statics problems
- Hydrothermal alteration mapping using multispectral and hyperspectral data
- Remote sensing ground truth including field mapping and geochemical surveys
- Hands-off analysis (using VNIR reflection spectroscopy) of geological materials, including those worked by man, such as pottery and stone objects
- Instruction and advice on the selection, acquisition and use of remote sensing techniques and data
- Ground Penetrating Radar (GPR), resistivity, and magnetic surveys for Archaeological and Environmental applications

Benefits

- **Cost-effective proof of basin charge, on- and off-shore**
- **Low-cost logistics and statics analysis for seismic acquisition**
- **Expert assistance in applying effective and low-cost methods of hydrocarbon, metals, and archaeological exploration**



Oil Slick, ship wakes, sediment plume, internal waves, Gulf of Mexico.

Top: Raw Landsat Image

Bottom: Enhanced Image

Courtesy Shell Oil Company, ImageLinks, Inc. and Space Imaging/EOSAT, Inc.